

T.I.G. PLANNING ASSISTANT

Well-organised planning – as easy as ABC!



www.tig.at

T.I.G.



Look ahead - save money

Our concept:

We have further developed the classical planning board to become the **T.I.G. ■ PLANNING ASSISTANT**, a powerful electronic tool to assist your planning personnel in their day-to-day work.

Input the production jobs to be dealt with into the **T.I.G. ■ PLANNING ASSISTANT** or download such jobs from a higher-ranking ERP system (Enterprise Resource Planning) such as SAP. Fall back on fully developed planning tools to optimise your planning horizon while constantly checking the means of production involved, e.g. machines, moulds, and material.

The automated acquisition of machine data by the **T.I.G. ■ PLANNING ASSISTANT**, will continuously update your planning personnel in terms of current orders, production schedules and production figures.

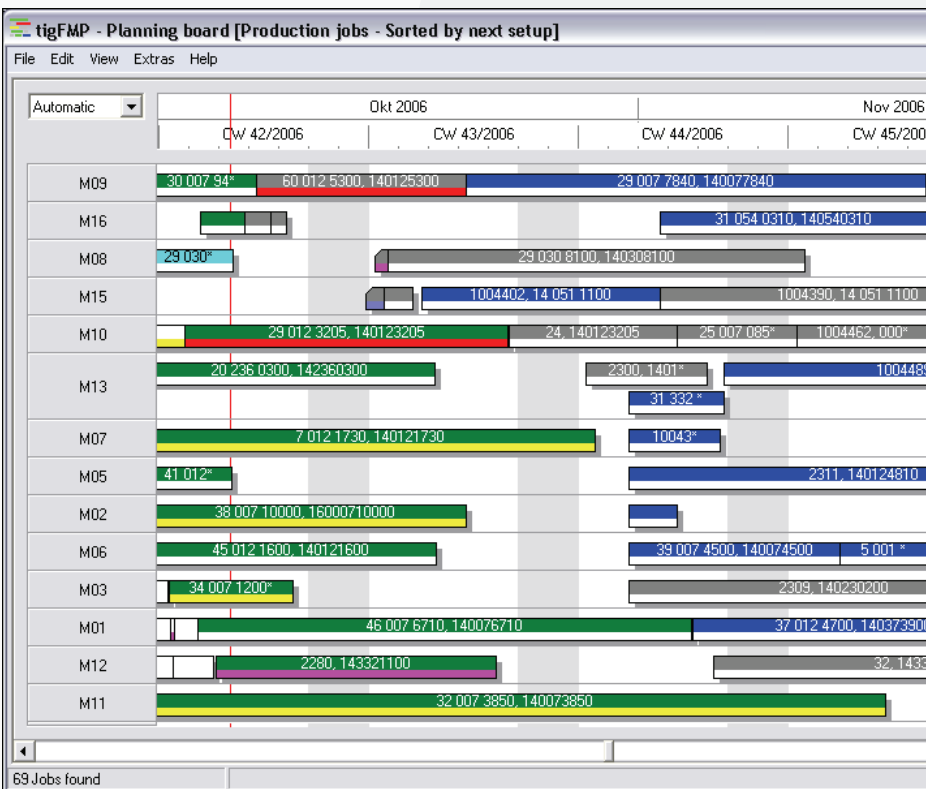
Application:

The **T.I.G. ■ PLANNING ASSISTANT** is a powerful planning tool, visualising all the planning steps required in a simple production job or a complex, multiple-stage order that might include a number of different articles. You are at the controls: schedule, move, change, release, interrupt, split, or terminate production sequences.

The control centre is where you find the graphic representation of all the production jobs you have planned so far. Multi-colour bars and symbols guide you through the current statuses of production jobs, actively warning of bottlenecks, delivery delays, or conflicting schedules.

The parts lists incorporated in the **T.I.G. ■ PLANNING ASSISTANT** make sure there will be no discrepancies in the plastic and packaging material used while enabling the traceability of individual production lots at any time.

Rely on the **T.I.G. ■ PLANNING ASSISTANT** to prepare the duty schedules of your production and machine-setting personnel. The **T.I.G. ■ PLANNING ASSISTANT** will immediately alert you of over- or understaffed shifts.



Graphic planning board - Planning Assistant

T.I.G. ■ PLANNING ASSISTANT

Well-organised planning – as easy as ABC!

Your benefit:

The **T.I.G. ■ PLANNING ASSISTANT** has uninterrupted access to production figures and deadlines, enabling your planning personnel to react swiftly and correctly to the ever-changing circumstances in production.

Save time and labour while boosting productivity: make use of the automated feedback of data from your machinery to the superset ERP system. Forget about the cost-intensive, manual acquisition of production figures and rejects.

Fine planning tools optimise the use of machines, moulds, resources, and personnel. Make your production run smoothly and more efficiently, while taking a glance at what lies before you.

The **T.I.G. ■ PLANNING ASSISTANT** will report deviations from set point values in graphic form, alerting whoever is in charge and advising whatever planning measures should become necessary.

Follow up the cost of finished production jobs and support the drive for continuous improvement by means of a whole range of expressive reports in the **T.I.G. ■ PLANNING ASSISTANT**.

The screenshot shows a software window titled "Job information" with a close button (X) in the top right corner. The window is divided into several sections:

- Job information:** Fields for Job number (32 007 3850), Download number (2242), Job status (Job running), Type of job (Production), Article (140073850 - Türgriff 1 702 024 080), Werkzeug (0073850 - 2-fach Masch. 65 To. Halbauto), Maschine (M11 - No. 300/650/01/03/5/11), Dataset, Priority (0), Customer (14007), Delivery date, Packing instruction, Lot number, and Comments (5 x /BSHG). There is a checkbox for "Start next job automatically".
- Production data:** A table with columns for "Production equipment" (140073850) and "Documents" (ACT). Rows include: Parts (41.600), Parts per bundle (160), Bundles (260), Scrap, Scraprate, Remain to produce (41.600), Cavity (2), Cycle time (38,00 s), Utilization (60,00 %), Setup time (1:00, 173:05 hh:mm), Setup delay, Take-down time (1:00, 108:28 hh:mm), Take-down delay, Forerun time, After-running time, Setup personnel (1,00), Personnel (0,50), Duration (367:55, 486:36 hh:mm), Begin (16.10.2006 21:39, 11.10.2006 08:57), and End (08.11.2006 05:34, 08.11.2006 21:57).
- Linked jobs:** Fields for Main job and Delayed start (hh:mm).
- Collision:** A text field.

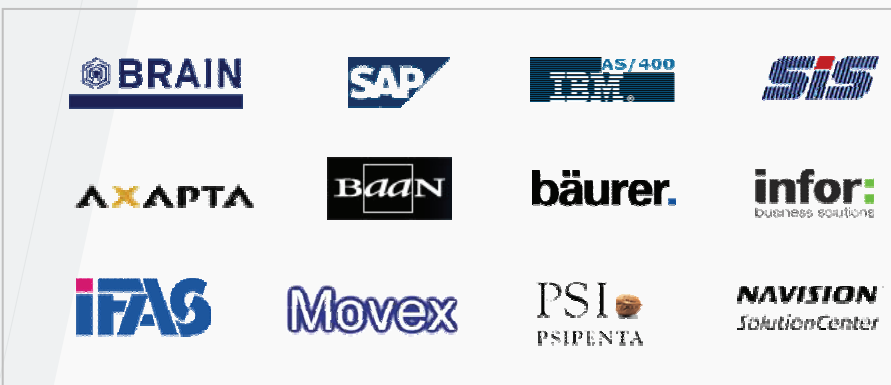
An "OK" button is located at the bottom left of the window.

Job information sheet

Interfaces:

The **T.I.G. ■ PLANNING ASSISTANT** features open and standardised interfaces to many higher-ranking ERP systems.

These interfaces serve to exchange production job data, material data, parts lists, company calendars, quality and maintenance data.



Some references of ERP interfaces

T.I.G. PLANNING ASSISTANT

Well-organised planning – as easy as ABC!



T.I.G.

RANKWEIL • WIENER NEUSTADT

TECHNISCHE INFORMATIONSSYSTEME GMBH

6830 Rankweil, Austria
Lehenweg 2

T +43/5522/41693-0
F +43/5522/41693-15

office@tig.at
www.tig.at